

# Series WTW-20-Pedestal (IP67)



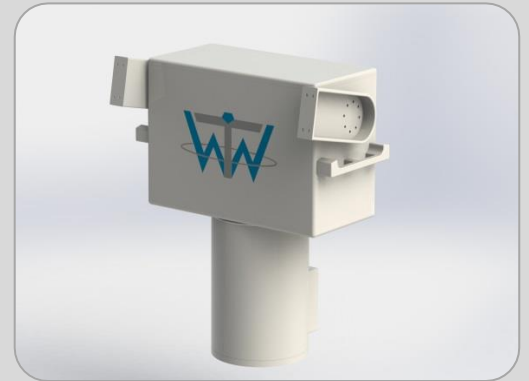
## Dual axis Pedestal



The WTW Anlagenbau GmbH is a premium manufacturer for telemetry antennas using the latest technology combined with ultimate performance for **Airplane, Helicopter, Missile and Rocket** test on **Land or Water**.

The WTW-LSC Tracking Antennas and Pedestals are developed in according to the latest technology to fulfil compactness, last technology, low weight and high efficiency.

This is possible with more than 30 years experienced personal in developing robust and long-lasting mechanics and excellent RF features.



## KEY FEATURES

- Weight: appr. 20 kg
- Dimension (Park Position El. 0°): appr. 17" x 9.5" x 18" (WxDxH)
- Mode:
  - Auto-, Slave-, Manual
- Torque:
  - Az. max. 50 Nm
  - El. max. 50 Nm
- Backlash: < 2arcmin
- Speed:
  - Az. max. 60°/sec
  - El. max. 60°/sec
- Movement:
  - Az. unlimited (Slipping)
  - El. -5° up to 185°
- operational Windspeed: up to 65mph
- stowed: up to 100mph

# Series WTW-20-Pedestal (IP67)



## National / International Sales / Marketing:

Tel Data System GmbH

Phone: +49 (0) 81 21 – 41 01 18

Email: [telemetrie@wtw-anlagenbau.de](mailto:telemetrie@wtw-anlagenbau.de)



## US Sales / Marketing:

WTW Tracking Antennas LLC

Contact: Quinn Bremes

Telephone: +1 619-994-7731

Email: [sales@WTWTrackingAntennas.com](mailto:sales@WTWTrackingAntennas.com)

## WTW Anlagenbau GmbH

Gutenbergstrasse 3

26632 Ihlow-Riepe

Germany

Phone: +49 (0) 4928/914598-0

Fax: +49 (0) 4928/914598-9

Email: [telemetrie@wtw-anlagenbau.de](mailto:telemetrie@wtw-anlagenbau.de)

Web: [www.tracking-antenna.de](http://www.tracking-antenna.de)

The Power of German Engineering



Rev. 2/2020