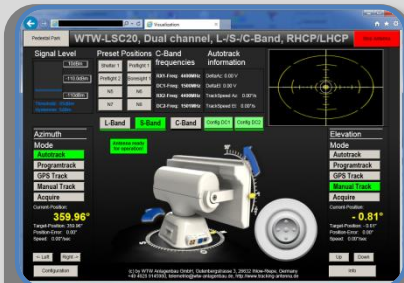


# Series WTW-LS 26 (IP64)



## The light weight dual axis auto tracking antenna.



The WTW LSC Tracking Antennas are developed in according to the latest technology to fulfil compactness, last technology, low weight and high efficiency.



This is possible with more than 15 years experienced personal in developing robust and long-lasting mechanics and excellent RF features.



### KEY FEATURES

- Weight: appr. 120 kg
- Dimension (Park Position): appr. 2.9ft x 2.5ft x 6.0ft (WxDxH)
- Polarisation: RHCP und LHCP
- Mode:
  - Auto-, Slave-, Manual-Tracking
- Torque:
  - Az. max. 530 Nm (or customized)
  - El. max. 650 Nm (or customized)
- Speed:
  - Az. max. 28°/sec (or customized)
  - El. max. 37°/sec (or customized)
- Movement:
  - Az. unlimited (Slipping)
  - El. -5° up to 90°
- operational Windspeed: up to 65mph
- stowed: up to 100mph

The WTW Anlagenbau GmbH is a premium manufacturer for telemetry antennas using the latest technology combined with ultimate performance for **Airplane, Helicopter, Missile and Rocket** test on **Land or Water**.

# Series WTW-LS 26 (IP64)



## Series WTW-LS 26

Reflector Size	2.9ft x 2.5ft
Frequency Range	1400 MHz to 2400 MHz Optional C1-, C2, C2e-Band
Gain	appr. 21 dBi @ 1850 MHz appr. 25 dBi @ 2350 MHz
Velocity Azimuth	max. 28°/sec
Velocity Elevation	max. 37°/sec
Acceleration Azimuth	max. 28°/sec <sup>2</sup>
Acceleration Elevation	max. 37°/sec <sup>2</sup>
Output Torque (max. intermittent)	650 Nm
Elevation Travel	-5° to 90°
Azimuth Travel	unlimited
Power Requirement	appr. 800 W
Temperature	-20°C to +70°C
Humidity	0 to 100%
Windspeed	Up to 65mph
Dimension in Park Position (WxDxH)	2.9ft x 2.5ft x 6.0ft

## Options

Radom
Gimbel
Battery
Diesel Generator
Pedestal for Downconverter, Receiver, Dehydrator

### National / International Sales / Marketing:

#### Tel Data System GmbH

Phone: +49 (0) 81 21 – 41 01 18

Email: [telemetrie@wtw-anlagenbau.de](mailto:telemetrie@wtw-anlagenbau.de)



### WTW Anlagenbau GmbH

Gutenbergstrasse 3

26632 Ihlow-Riepe

Germany

Phone: +49 (0) 4928/914598-0

Fax: +49 (0) 4928/914598-9

Email: [telemetrie@wtw-anlagenbau.de](mailto:telemetrie@wtw-anlagenbau.de)

Web: [www.tracking-antenna.de](http://www.tracking-antenna.de)

### US Sales / Marketing:

#### Rampart Defense Solutions LLC

Phone: +1 423.552.7064

Email: [Brenda@rampartds.com](mailto:Brenda@rampartds.com)



The Power of German Engineering



Partner for progress  
DIN EN ISO 9001:2008

Rev. January 2017